

GOVERNMENT OF MIZORAM
POWER & ELECTRICITY DEPARTMENT

Champhai Power Circle

ANNUAL REPORT
2008-2009

*Prepared & issued by
Superintending Engineer,
Champhai Power Circle*

May, 2010

Champhai Power Circle

ANNUAL REPORT FOR 2008-2009

CONTENT

	Pages
1. Brief History of the Circle	5-6
2. Organization set up	7-14
3. Expenditure on D&A	15-20
4. Power Profile	21-26
5. Report on DT, Consumers, Lines	27-32

ANNUAL REPORT OF CHAMPHAI POWER CIRCLE FOR 2008-09

Prepared by

F.Rualzakhuma

Superintending Engineer
Champhai Power Circle
Power & Electricity Department
Government of Mizoram
(May, 2010)

Copies 100
(For official circulation only)

.....

Contact Address: Superintending Engineer
Champhai Power Circle
Kahrawt, Champhai
Phone: 03831-235077
Fax: 03831-234306

Note:

This is the first Annual Report of Champhai Power Circle prepared since its functioning. More detail report is difficult to prepare due to non availability of required data in proper form.

Disclaimer:

Some of the data are only indicative as the same may not be accurate due to various certain reasons. Hence the data may not be used as official correct data.

BRIEF HISTORY OF CHAMPHAI POWER CIRCLE

1. Creation of the Circle:

- a) The present Champhai Power Circle was created initially in the name of '**Project Circle**' vide Government of Mizoram, Power & Electricity Department's Notification No. A.11013/4/93-P&E dt 6th June 2000 without mentioning its headquarters.
- b) As per Government of Mizoram, Power & Electricity Department's Notification No. A.11013/1/90-P&E dt 16th October 2000, the name of the 'Project Circle' was **renamed** as '**Project Circle-I**' with its headquarters at Aizawl.
- c) As per Government of Mizoram, Power & Electricity Department's Notification No. A.11013/1/90-P&E/267 dt 8th May 2001 the name of the Circle was again **renamed** as '**Champhai Power Circle**' with its headquarters at Champhai.
- d) Due to non posting of other officers/staff of the newly created Circle and also due to non provision of separate budget, the Circle was functioned with only Superintending Engineer with its temporary office in the office of Chief Engineer, Power & Electricity Department till June 2001.
- e) From the month of July, 2001 initiative was taken for functioning of the Circle office at Champhai in a rented house which was continuing till date.
- f) The Circle cannot be considered as a full fledged Circle office since essential posts for full fledged functioning of the office like Executive Engineer (Planning), Assistant, Steno, etc. are not available.

2. Posting of Superintending Engineers:

Sl. No.	Name & Qualification	From	To
1)	F.Rualzakhuma, BE (Elect)	29.12.2000	29.06.2001 (at Aizawl)
2)	R.Vanlalhruaia, BE(Elect)	29.06.2001	24.01.2006 (at Champhai)
3)	P.Sarkar, Diploma (Elect)	24.01.2006	23.06.2008 (at Champhai)
4)	L.Pachuau, BE (Elect)	23.06.2008	(at Champhai)

3. Jurisdiction:

The Champhai Power Circle is having two Divisions and five Sub Divisions as follow-

- 1) Khawzawl Power Division
 - i) Khawzawl Power Sub Division, Khawzawl
 - ii) Ngopa Power Sub Division, Ngopa

- 2) Power Project Division, Champhai
 - i) Champhai Power Sub Division, Champhai
 - ii) Champhai Rural Power Sub Division
 - iii) Lamsial Project Sub Division, Farkawn

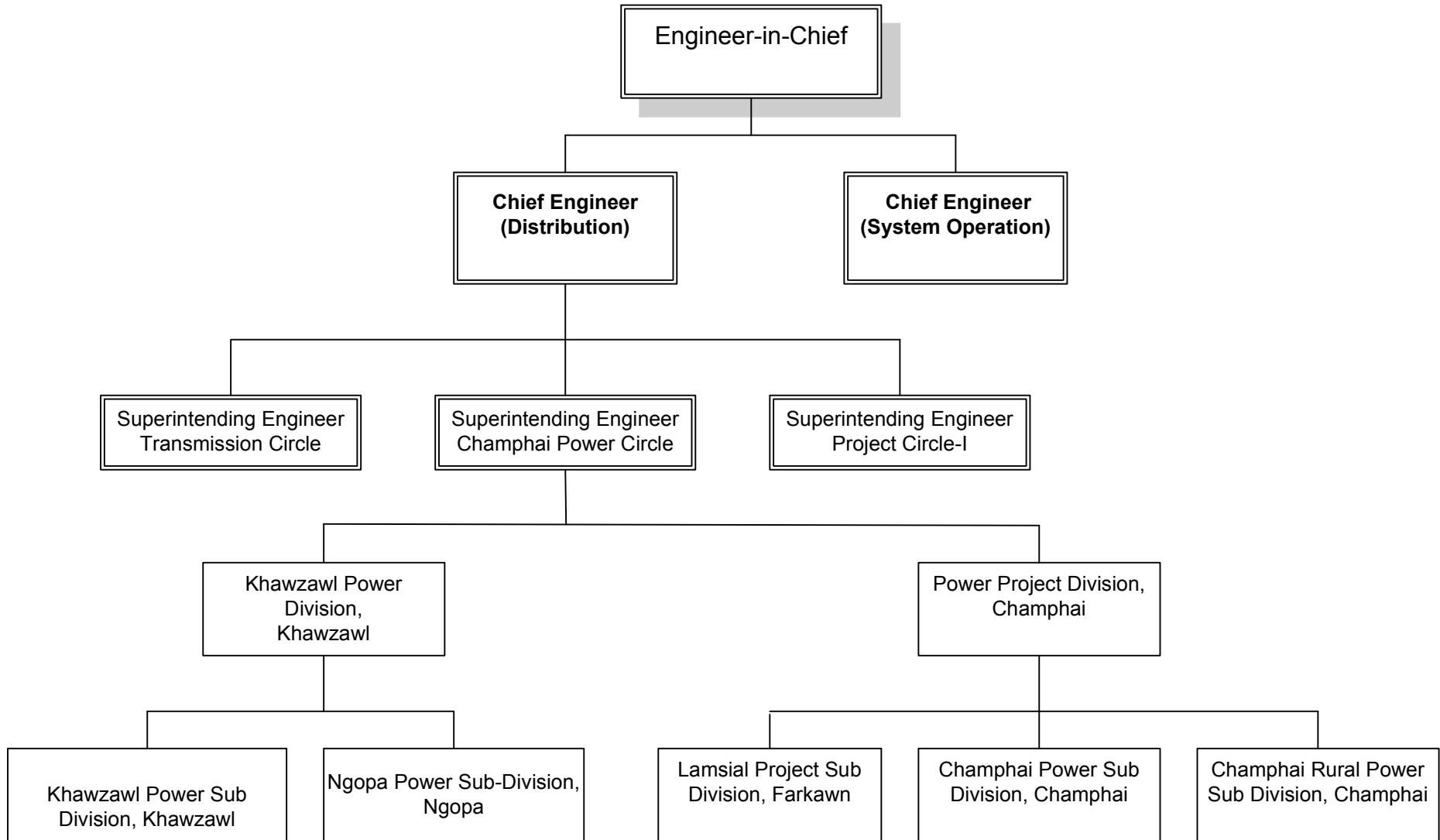
The geographical jurisdiction of the Circle is more or less same as the administrative area of Champhai District. However the maintenance of the existing 132kV lines (charged at 33kV) from Saitual to Khawzawl and E.Lungdar to Khawzawl is looking after by this Circle.

CHAMPHAI POWER CIRCLE
ANNUAL REPORT 2008-09



Organisation Set up

ORGANISATION CHART



**LIST OF SANCTION POSTS
(Circle/Division-wise)**

Sl. No.	Name of Post	Champhai Power Circle				Total under PPD	Total under KPD	Total under CPC
		Perma- nent Posts	Temporary Posts		Total			
			Plan	Non-Plan				
1	2	3	4	5	6	7	8	9
1	SE (E)	-	1	-	1	-	-	1
2	EE (E)	-	-	-	-	1	1	2
3	AE/SDO (E)	-	1	-	1	3	2	6
4	J.E(E)/Asst Inspector(E)	-	2	-	2	8	6	16
5	J.E (C)	-	-	1	1	4	-	5
6	Sr. Lineman	-	-	-	-	5	2	7
7	Lineman-I	-	-	-	-	-	1	1
8	Lineman-II	-	-	-	-	10	5	15
9	S.A	-	-	-	-	1	-	1
10	Mechanic-I	-	-	-	-	-	1	1
11	Mechanic-II	-	-	-	-	1	-	1
12	Electrician-II	-	-	-	-	-	2	2
13	E.O-I	-	-	-	-	-	2	2
14	E.O-II	-	-	-	-	4	2	6
15	S.B.O-II	-	-	-	-	5	1	6
16	Compressor Operator	-	-	-	-	1	-	1
17	Wireman	-	-	-	-	2	-	2
18	Fitter	-	-	-	-	2	-	2
19	Electrical Worker	-	-	-	-	24	16	40
20	Sr. Meter Reader	-	-	-	-	-	1	1
21	Meter Reader	-	-	-	-	7	1	8
22	W/T. Operator	-	-	-	-	1	-	1
23	Driver	-	-	1	1	3	3	7
24	Storekeeper	-	-	-	-	1	-	1
25	H.A / Assistant	-	-	-	-	1	1	2
26	D.A	-	-	-	-	1	1	2
27	A.D.A	-	-	-	-	1	2	3
28	Steno-III	-	-	1	1	-	-	1
29	UDC	-	-	1	1	4	2	7
30	LDC	-	-	2	2	5	6	13
31	Peon	1	-	1	2	5	5	12
32	Chowkidar	-	-	1	1	3	2	6
	TOTAL	1	4	8	13	103	65	181

LIST OF SANCTION POSTS UNDER POWER PROJECT DIVISION, CHAMPHAI

Sl. No.	Name of Post	Power Project Division				Champhai Power S/D				Champhai Rural Power S/D				Lamsial Project S/D				Total under PPD
		Perma- nent Posts	Temporary Posts		Total	Perma- nent Posts	Temporary Posts		Total	Perma- nent Posts	Temporary Posts		Total	Perma- nent Posts	Temporary Posts		Total	
			Plan	Non-Plan			Plan	Non-Plan			Plan	Non-Plan			Plan	Non-Plan		
1	2	3	4	5	6	7	8	9	10	11	12	13	14	15	16	17	18	19
1	EE (E)	-	1	-	1	-	-	-	0	-	-	-	0	-	-	-	0	1
2	AE/SDO (E)	-	-	-	0	-	-	1	1	-	-	1	1	-	1	-	1	3
3	J.E(E)/Asst Inspector(E)	-	2	-	2	-	-	3	3	-	-	3	3	-	-	-	0	8
4	J.E (C)	-	-	1	1	-	-	-	0	-	-	-	0	-	-	3	3	4
5	Sr. Lineman	-	-	-	0	-	-	3	3	-	-	2	2	-	-	-	0	5
6	Lineman-I	-	-	-	0	-	-	-	0	-	-	-	0	-	-	-	0	0
7	Lineman-II	-	-	-	0	-	-	6	6	-	-	4	4	-	-	-	0	10
8	S.A	-	-	-	0	-	-	-	0	-	-	-	0	1	-	-	1	1
9	Mechanic-I	-	-	-	0	-	-	-	0	-	-	-	0	-	-	-	0	0
10	Mechanic-II	-	-	-	0	-	-	1	1	-	-	-	0	-	-	-	0	1
11	Electrician-II	-	-	-	0	-	-	-	0	-	-	-	0	-	-	-	0	0
12	E.O-I	-	-	-	0	-	-	-	0	-	-	-	0	-	-	-	0	0
13	E.O-II	-	-	-	0	-	-	4	4	-	-	-	0	-	-	-	0	4
14	S.B.O-II	-	-	-	0	-	-	2	2	-	-	3	3	-	-	-	0	5
15	Compressor Operator	-	-	-	0	-	-	-	0	-	-	-	0	-	-	1	1	1
16	Wireman	-	-	-	0	-	-	-	0	-	2	-	2	-	-	-	0	2
17	Fitter	-	-	-	0	-	-	2	2	-	-	-	0	-	-	-	0	2
18	Electrical Worker	-	-	-	0	-	2	8	10	-	-	10	10	-	-	4	4	24
19	Sr. Meter Reader	-	-	-	0	-	-	-	0	-	-	-	0	-	-	-	0	0
20	Meter Reader	-	-	-	0	-	3	1	4	-	3	-	3	-	-	-	0	7
21	W/T. Operator	-	1	-	1	-	-	-	0	-	-	-	0	-	-	-	0	1
22	Driver	-	-	1	1	-	-	1	1	-	-	-	0	-	-	1	1	3
23	Storekeeper	-	-	-	0	-	-	-	0	-	-	-	0	-	-	1	1	1
24	H.A / Assistant	-	-	1	1	-	-	-	0	-	-	-	0	-	-	-	0	1
25	D.A	-	-	1	1	-	-	-	0	-	-	-	0	-	-	-	0	1
26	A.D.A	1	-	-	1	-	-	-	0	-	-	-	0	-	-	-	0	1
27	Steno-III	-	-	-	0	-	-	-	0	-	-	-	0	-	-	-	0	0
28	UDC	-	-	1	1	-	-	1	1	-	-	1	1	-	-	1	1	4
29	LDC	-	-	1	1	-	-	2	2	-	-	1	1	-	-	1	1	5
30	Peon	-	-	-	0	-	-	2	2	-	-	1	1	-	-	2	2	5
31	Chowkidar	-	-	1	1	-	-	1	1	-	-	-	0	-	1	-	1	3
	TOTAL	1	4	7	12	-	5	38	43	-	5	26	31	1	2	14	17	103

LIST OF SANCTION POSTS UNDER KHAWZAWL POWER DIVISION

Sl. No.	Name of Post	Khawzawl Power Division				Khawzawl Power S/D				Ngopa Power S/D				Total under KPD
		Perma-nent Posts	Temporary Posts		Total	Perma-nent Posts	Temporary Posts		Total	Perma-nent Posts	Temporary Posts		Total	
			Plan	Non-Plan			Plan	Non-Plan			Plan	Non-Plan		
1	2	3	4	5	6	7	8	9	10	11	12	13	14	19
1	EE (E)	-	-	1	1	-	-	-	0	-	-	-	0	1
2	AE/SDO (E)	-	-	-	0	-	-	1	1	1	-	-	1	2
3	J.E(E)/Asst Inspector(E)	-	-	2	2	-	-	3	3	-	-	1	1	6
4	J.E (C)	-	-	-	0	-	-	-	0	-	-	-	0	0
5	Sr. Lineman	-	-	-	0	-	1	1	2	-	-	-	0	2
6	Lineman-I	-	-	-	0	-	-	1	1	-	-	-	0	1
7	Lineman-II	-	-	-	0	-	1	2	3	-	-	2	2	5
8	S.A	-	-	-	0	-	-	-	0	-	-	-	0	0
9	Mechanic-I	-	-	-	0	-	-	1	1	-	-	-	0	1
10	Mechanic-II	-	-	-	0	-	-	-	0	-	-	-	0	0
11	Electrician-II	-	-	-	0	-	-	2	2	-	-	-	0	2
12	E.O-I	-	-	-	0	-	-	2	2	-	-	-	0	2
13	E.O-II	-	-	-	0	-	-	2	2	-	-	-	0	2
14	S.B.O-II	-	-	-	0	-	-	1	1	-	-	-	0	1
15	Compressor Operator	-	-	-	0	-	-	-	0	-	-	-	0	0
16	Wireman	-	-	-	0	-	-	-	0	-	-	-	0	0
17	Fitter	-	-	-	0	-	-	-	0	-	-	-	0	0
18	Electrical Worker	-	-	-	0	-	4	4	8	-	-	8	8	16
19	Sr. Meter Reader	-	-	-	0	-	-	1	1	-	-	-	0	1
20	Meter Reader	-	-	-	0	-	-	1	1	-	-	-	0	1
21	W/T. Operator	-	-	-	0	-	-	-	0	-	-	-	0	0
22	Driver	-	-	1	1	-	-	1	1	-	-	1	1	3
23	Storekeeper	-	-	-	0	-	-	-	0	-	-	-	0	0
24	H.A / Assistant	-	-	1	1	-	-	-	0	-	-	-	0	1
25	D.A	-	-	1	1	-	-	-	0	-	-	-	0	1
26	A.D.A	-	-	2	2	-	-	-	0	-	-	-	0	2
27	Steno-III	-	-	-	0	-	-	-	0	-	-	-	0	0
28	UDC	-	-	1	1	-	1	-	1	-	-	0	0	2
29	LDC	-	-	2	2	-	-	2	2	2	-	-	2	6
30	Peon	-	-	2	2	-	-	2	2	-	-	1	1	5
31	Chowkidar	-	-	1	1	-	-	-	0	-	-	1	1	2
	TOTAL	-	-	14	14	-	7	27	34	3	0	14	17	65

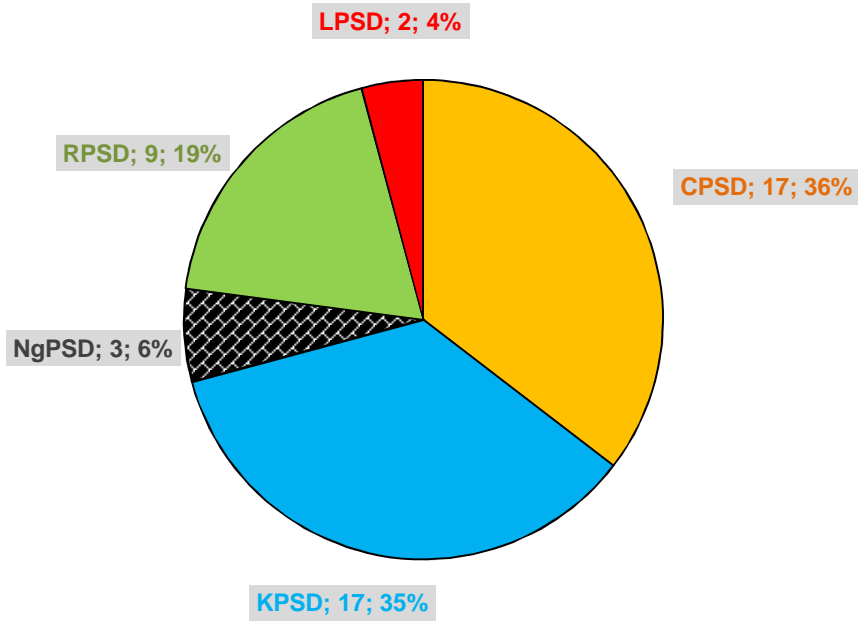
STATISTIC OF WORKCHARGED (AS ON MARCH 2009)

Sl. No.	Category of posts (Work Charged)	Power Project Division, Champhai				Khawzawl Power Division			TOTAL CPC
		Champhai Power S/D	Champhai Rural Power S/D	Lamsial Project S/D	Total PPD	Khawzawl Power S/D	Ngopa Power S/D	Total KPD	
1	2	3	4	5	6	7	8	9	10
3	Section Assistant	1			1			0	1
12	Electrical Worker	4	6	2	12	11	2	13	25
14	W.T. Optr.	1			1			0	1
15	Meter Reader	7	3		10	6	1	7	17
16	Carpenter				0			0	0
23	Driver	2			2			0	2
26	Chowkidar/Peon	2			2			0	2
	TOTAL	17	9	2	28	17	3	20	48

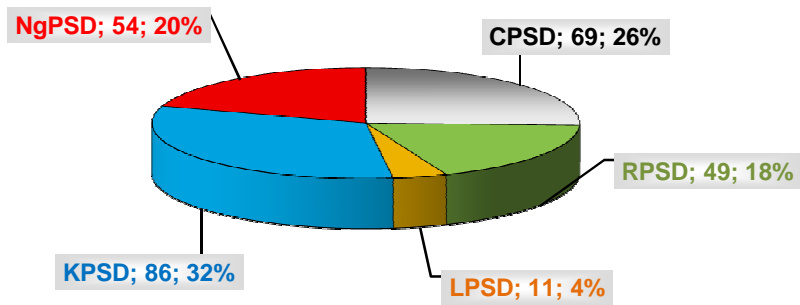
STATISTIC OF MUSTER ROLL LABOURER (AS ON MARCH 2009)

Sl. No.	Grade	Power Project Division, Champhai				Khawzawl Power Division			TOTAL CPC
		Champhai Power S/D	Champhai Rural Power S/D	Lamsial Project S/D	Total PPD	Khawzawl Power S/D	Ngopa Power S/D	Total KPD	
1	2	3	4	5	6	7	8	9	10
1	Skill-I	6	1		7	4	4	8	15
2	Skill-II	35	10	1	46	46	21	67	113
3	Semi Skill	13	13	2	28	11	6	17	45
4	Unskill	15	25	8	48	25	23	48	96
	Total	69	49	11	129	86	54	140	269

**Sub Division-wise No. & Percentage of WC Staff
(As in March 2009)**



**Sub Division-wise No. & Percentage of MR
Labourers (As in March 2009)**



CHAMPHAI POWER CIRCLE
ANNUAL REPORT 2008-09



Expenditure on
D & A

Quarterly Expenditure on D&A during 2008-09

Name of Office: **Champhai Power Circle**

Rupees in Lakhs

1	2	3	4	5	6	7	8	9	10	11
Qtr	P/NP	(01) SALARY	(06) M R	(11) T E	(13) O E	(14) RENT	(26) ADVT	(50) OC	(51) MV	Total
1st Quarter (Apr-Jun, 2008)	Plan	-	-	0.50000	0.40000	0.16800	-	-	0.80000	1.86800
	Non-Plan	7.44250	-	-	-	-	-	-	-	7.44250
	Total	7.44250	-	0.50000	0.40000	0.16800	-	-	0.80000	9.31050
2nd Quarter (Jul-Sep, 2008)	Plan	-	-	-	0.40000	-	-	-	0.40000	0.80000
	Non-Plan	6.42605	0.50000	0.25000	1.00000	-	-	-	0.50000	8.67605
	Total	6.42605	0.50000	0.25000	1.40000	-	-	-	0.90000	9.47605
3rd Quarter (Oct-Dec, 2008)	Plan	-	0.50000	-	-	0.16800	-	-	0.30000	0.96800
	Non-Plan	6.99016	-	0.30000	0.40000	-	-	-	0.40000	8.09016
	Total	6.99016	0.50000	0.30000	0.40000	0.16800	-	-	0.70000	9.05816
4th Quarter (Jan-Mar, 2009)	Plan	-	-	0.30000	0.40000	0.16800	-	-	0.40000	1.26800
	Non-Plan	3.79063	1.14403	-	-	-	-	-	-	4.93466
	Total	3.79063	1.14403	0.30000	0.40000	0.16800	-	-	0.40000	6.20266
Total for the year		24.64934	2.14403	1.35000	2.60000	0.50400	-	-	2.80000	34.04737

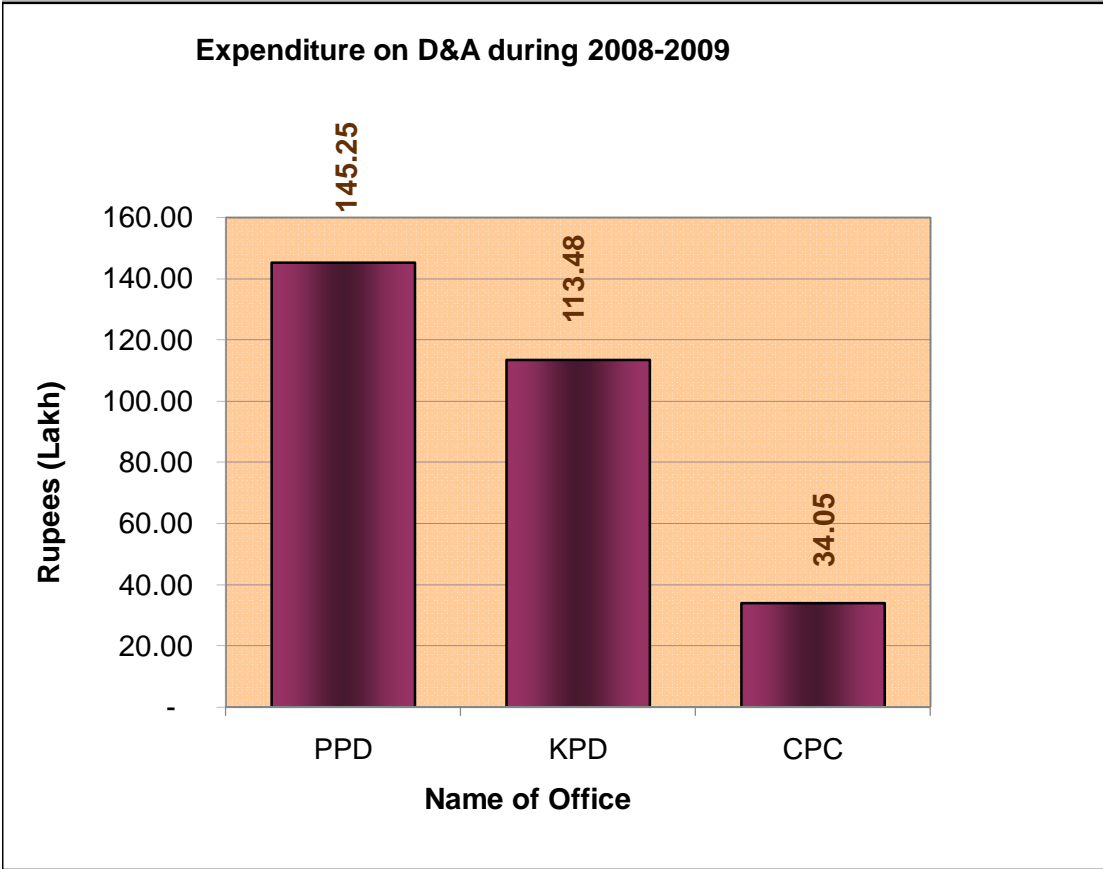
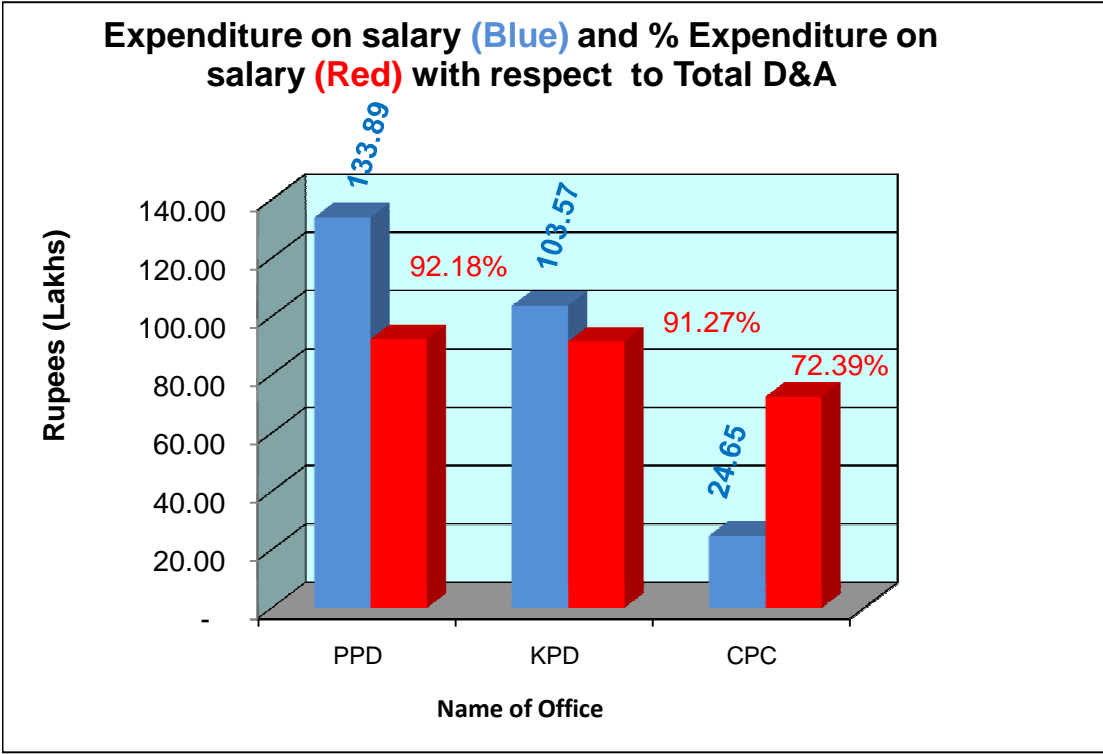
Quarterly Expenditure on D&A during 2008-09

Name of Office:		Power Project Division, Champhai									Rupees in Lakhs
1	2	3	4	5	6	7	8	9	10	11	
Qtr	P/NP	(01) SALARY	(06) M R	(11) T E	(13) O E	(14) RENT	(26) ADVT	(50) OC	(51) MV	Total	
1st Quarter (Apr-Jun, 2008)	Plan		0.40000	0.29720	0.40000	0.24000			0.40000	1.73720	
	Non-Plan	38.87410								38.87410	
	Total	38.87410	0.40000	0.29720	0.40000	0.24000	-	-	0.40000	40.61130	
2nd Quarter (Jul-Sep, 2008)	Plan		1.41000	0.32076						1.73076	
	Non-Plan	29.99739	1.50000	1.00924	0.04741				0.40000	32.95404	
	Total	29.99739	2.91000	1.33000	0.04741	-	-	-	0.40000	34.68480	
3rd Quarter (Oct-Dec, 2008)	Plan	3.22599	0.36539	0.94751	0.02186	0.24000				4.80075	
	Non-Plan	38.34970								38.34970	
	Total	41.57569	0.36539	0.94751	0.02186	0.24000	-	-	-	43.15045	
4th Quarter (Jan-Mar, 2009)	Plan			0.47970	0.50000	0.24000			0.50000	1.71970	
	Non-Plan	23.44169	1.64204							25.08373	
	Total	23.44169	1.64204	0.47970	0.50000	0.24000	-	-	0.50000	26.80343	
Total for the year		133.88887	5.31743	3.05441	0.96927	0.72000	-	-	1.30000	145.24998	

Quarterly Expenditure on D&A during 2008-09

Name of Office: **Khawzawl Power Division, Khawzawl** Rupees in Lakhs

1	2	3	4	5	6	7	8	9	10	11
Qtr	P/NP	(01) SALARY	(06) M R	(11) T E	(13) O E	(14) RENT	(26) ADVT	(50) OC	(51) MV	Total
1st Quarter (Apr-Jun, 2008)	Plan			0.50840	0.40000				0.40000	1.30840
	Non-Plan	32.97329								32.97329
	Total	32.97329	-	0.50840	0.40000	-	-	-	0.40000	34.28169
2nd Quarter (Jul-Sep, 2008)	Plan			0.94698	0.90000				1.00000	2.84698
	Non-Plan	24.92833	1.06299							25.99132
	Total	24.92833	1.06299	0.94698	0.90000	-	-	-	1.00000	28.83830
3rd Quarter (Oct-Dec, 2008)	Plan	4.70473	0.37942	1.06967						6.15382
	Non-Plan	24.13017			1.42072					25.55089
	Total	28.83490	0.37942	1.06967	1.42072	-	-	-	-	31.70471
4th Quarter (Jan-Mar, 2009)	Plan		0.45912	0.34905	0.50000					1.30817
	Non-Plan	16.83161	0.51560							17.34721
	Total	16.83161	0.97472	0.34905	0.50000	-	-	-	-	18.65538
Total for the year		103.56813	2.41713	2.87410	3.22072	-	-	-	1.40000	113.48008



CHAMPHAI POWER CIRCLE
ANNUAL REPORT 2008-09



Power Profile

SUB-DIVISION WISE MONTHLY ENERGY INPUT FOR 2008-2009

Energy in MU

S/N	Name of Office	Apr '08	May '08	Jun '08	Jul '08	Aug '08	Sep '08	Oct '08	Nov '08	Dec '08	Jan '09	Feb '09	Mar '09	Total
1	2	3	4	5	6	7	8	9	10	11	12	13	14	15
1	Champhai Power Sub-Division	0.796000	0.705900	0.697000	0.674800	0.675100	0.688100	0.739900	0.621800	0.595800	0.660100	0.624500	0.642300	8.121300
2	Champhai Rural Power Sub-Division								0.324200	0.249600	0.238500	0.244500	0.190300	1.247100
3	Total Power Project Division, Champhai	0.796000	0.705900	0.697000	0.674800	0.675100	0.688100	0.739900	0.946000	0.845400	0.898600	0.869000	0.832600	9.368400
4	Khawzawl Power Sub-Division	0.285753	0.245401	0.227513	0.244195	0.268705	0.278202	0.274040	0.301134	0.292975	0.320320	0.295470	0.302445	3.336153
5	Ngopa Power Sub-Division	0.206539	0.179665	0.175366	0.181840	0.195999	0.132471	0.157025	0.165414	0.165939	0.210021	0.219237	0.250792	2.240308
6	Total Khawzawl Power Division	0.492292	0.425066	0.402879	0.426035	0.464704	0.410673	0.431065	0.466548	0.458914	0.530341	0.514707	0.553237	5.576461
7	Total Champhai Power Circle	1.288292	1.130966	1.099879	1.100835	1.139804	1.098773	1.170965	1.412548	1.304314	1.428941	1.383707	1.385837	14.944861

Note: Champhai Rural Power Sub-Division is newly funtioned Sub-Division and started energy accounting since November, 2008

LOCAL GENERATION (NET) DURING 2008-2009

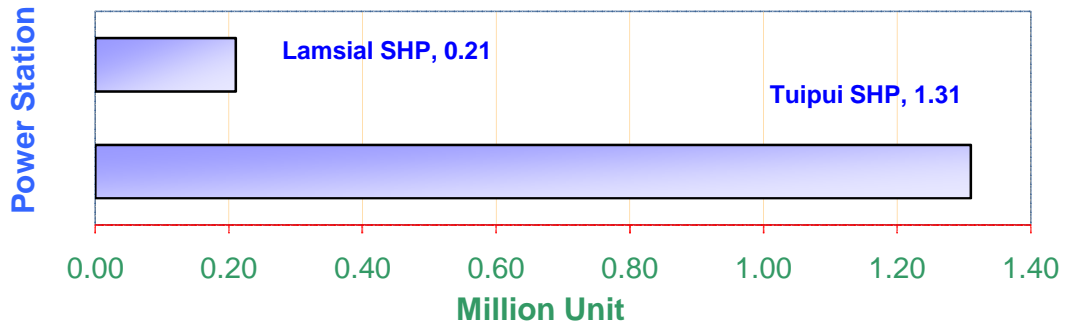
Figures in kWh

Month	Lamsial (Hydel)	Tuipui (Hydel)	TOTAL
1	2	3	4
Apr '08			0
May '08			0
Jun '08			0
Jul '08		270423	270423
Aug '08		328740	328740
Sep '08	78716.5	351926	430642.5
Oct '08	134781	239246	374027
Nov '08		114498	114498
Dec '08		1941	1941
Jan '09		2143	2143
Feb '09			0
Mar '09			0
Total (kWh)	213497.5	1308917	1522414.5
Total (MU)	0.21	1.31	1.52

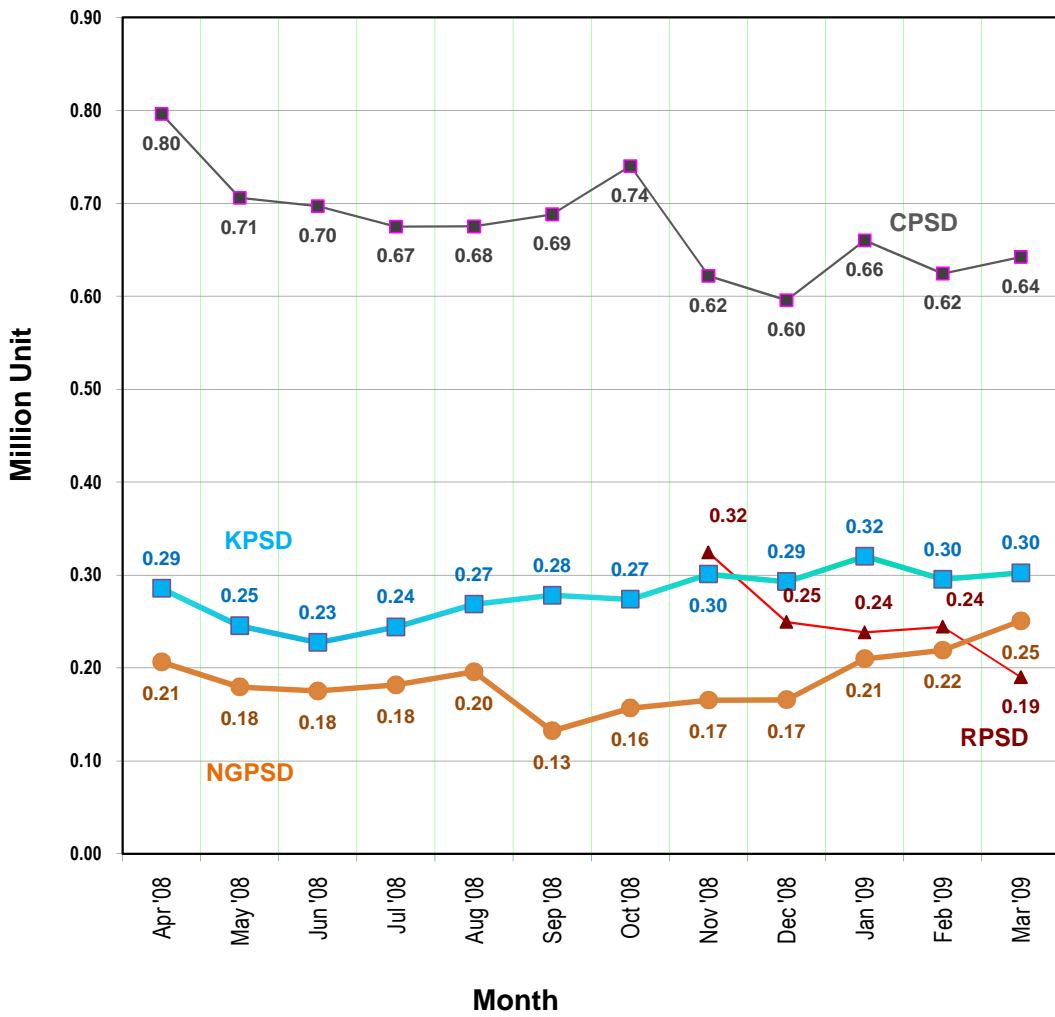
PERFORMANCE CHAMPHAI POWER CIRCLE DURING 2008-09

Sl.No	Particulars	Champhai PSD	Champhai Rural PSD	PPD, Champhai	Khawzawl PSD	Ngopa PSD	Khawzawl PD	Champhai Power Circle
1	2	3	4	5	6	7	8	9
a	Total Energy input (MU)	8.121300	1.247100	9.368400	3.336153	2.240308	5.576461	14.944861
b	Energy Billed (MU)	6.409385	1.032500	7.441885	2.707830	1.813990	4.521820	11.963705
c	Billing Efficiency (%) $c = (b / a) * 100$	79%	83%	79%	81%	81%	81%	80%
d	Revenue Billed (Rs crores)	1.3359263	0.1806891	1.5166154	0.5331085	0.3515261	0.8846346	2.4012500
e	Revenue Collected (Rs crores)	1.3475273	0.1719975	1.5195248	0.5268452	0.3621258	0.8889710	2.4084958
f	Collection Efficiency (%) $f = (e / d) * 100$	101%	95%	100%	99%	103%	100%	100%
g	ARR w.r.t. Energy input (Rs per unit) $g = e / a$	0.17	0.14	0.16	0.16	0.16	0.16	0.16
h	T & D Loss (%) $h = (a-b) / a$	21%	17%	21%	19%	19%	19%	20%
i	Units realised (MU) $i = b * f$	6.47	0.98	7.46	2.68	1.87	4.54	12.00
j	AT&C Loss (%) $j = (a-i) / a$	20%	21%	20%	20%	17%	19%	20%

Local Generation during 2008-09



Energy Input during 2008-09



CHAMPHAI POWER CIRCLE
ANNUAL REPORT 2008-09



Report on
DTs, Consumers, Lines

Abstract of Existing Distribution Transformers during 2008-09

		Distribution Transformers, 11kV/0.4kV																		
		250kVA		160kVA		125kVA		100kVA		63kVA		50kVA		25kVA		16kVA, 11/0.2kV		Total		
S/N	Name of Division	Quantity	Metered	Quantity	Metered	Quantity	Metered	Quantity	Metered	Quantity	Metered	Quantity	Metered	Quantity	Metered	Quantity	Metered	Quantity	Metered	% Metered
1	2	3	4	5	6	7	8	9	10	11	12	13	14	15	16	17	18	19	20	21
1	Champhai Power Sub-Division	18	17	1				29	22	11	5			7	1	1		67	45	67
2	Champhai Rural Power Sub-Division	2	1					8	2	15	3			12		1		38	6	16
3	Lamsial Project Sub-Division																	0	0	
Total Power Project Division, Champhai		20		1		0		37		26		0		19		2	0	105	51	49
3	Khawzawl Power Sub-Division	8	8					22	22	10	10			12	12			52	52	100
4	Ngopa Power Sub-Division					1	1	19	8	12	8			8	7			40	24	60
Total Khawzawl Power Division		8		0		1		41		22		0		20		0	0	92	76	83
TOTAL CHAMPHAI POWER CIRCLE		28		1		1		78		48		0		39		2	0	197	127	64

Abstract of damaged Distribution Transformers during 2008-09

SI No.	Name of Division	250kVA, 11/0.4kV	160kVA, 11/0.4kV	100kVA, 11/0.4kV	63kVA, 11/0.4kV	25kVA, 11/0.4kV	16kVA, 11/0.4kV	Office wise Total damage DT	Office wise damage percentage w.r.t. Total damaged DT	Office wise Total DT of various ratings	Office wise damaged percentage w.r.t Total DT
1	2	3	4	5	6	7	8	9	10	11	12
1	Champhai Power Sub-Division							0	0.00%	67	0.00%
2	Champhai Rural Power Sub-Division					2		2	33.33%	38	5.26%
3	Lamsial Project Sub-Division, Farkawn							0	0.00%	0	0.00%
4	Total Power Project Division, Champhai	0	0	0	0	2	0	2	33.33%	105	1.90%
5	Khawzawl Power Sub-Division							0	0.00%	52	0.00%
6	Ngopa Power Sub-Division			2	1	1		4	66.67%	40	10.00%
7	Total Khawzawl Power Division	0	0	2	1	1	0	4	66.67%	92	4.35%
8	TOTAL CHAMPHAI POWER CIRCLE	0	0	2	1	3	0	6		197	3.05%
	Rating-wise Total damage	0	0	2	1	3	0				
	Rating-wise damage % w.r.t damaged DT	0	0	33.33	16.67	50.00	0				

Consumers under Champhai Power Circle
(as in March 2009)

Category	Khawzawl Power Sub Division	Ngopa Power Sub Division	Khawzawl Power Division	Champhai Power Sub Division	Champhai Rural Power Sub Division	Power Project Division, Champhai	Champhai Power Circle
1	2	3	4	5	6	7	8
KJS	344	853	1197	135	189	324	1521
Domestic	4905	2814	7719	5850	4411	10261	17980
Commercial	100	48	148	159	22	181	329
Industry	4	1	5	65	36	101	106
Agriculture			0	3		3	3
Public Water Works			0	3	1	4	4
Bulk Supply	3	4	7	4		4	11
Public Lighting	1	1	2	1	1	2	4
	5357	3721	9078	6220	4660	10880	19958

STATISTIC OF LINES UNDER CHAMPHAI POWER CIRCLE

Figures in kilometre

Sub Division/Division/Circle	132kV	33kV	11kV	LT Line				Remarks
				3p-5W	3p-4W	2p-3W	1p-2W	
1	2	3	4	5	6	7	8	9
Champhai Power Sub Division		33.5	112.59	50.08	11.25	8.89	8.53	
Champhai Rural Power Sub Division		89	223.45	28.04	10.95	9.24	13.25	Out of 89km 33kV line, 20km charged at 11kV
Total Power Project Division, Champhai	0	122.5	336.04	78.12	22.2	18.13	21.78	
Khawzawl Power Sub Division	148.5	2	194.7	82.55	2	2.05		132kV Line charged at 33kV
Ngopa Power Sub Division		31	199.255	25.6	10.45	9.45		
Total Khawzawl Power Division	148.5	33	393.955	108.15	12.45	11.5	0	
Total Champhai Power Circle	148.5	155.5	729.995	186.27	34.65	29.63	21.78	