

Power & Electricity Department
Government of Mizoram

ANNUAL REPORT FOR 2011-12

CONTENT

	Pages
1. Introduction	3
2. Organization set up	4
3. Annual Plan at a glance	7
4. Revenue Receipt	10
5. Generating Stations in Mizoram	11
6. Transmission & Distribution lines	12
7. Sub-Stations in Mizoram	13
8. Power Purchase	16
9. Energy Accounting	17

ANNUAL REPORT FOR 2011-12

Prepared by

Planning Cell

Office of Engineer-in- Chief
Power & Electricity Department
Government of Mizoram
Aizawl – 796001

(For official circulation only)



Contact Address:

Engineer-in- Chief
Power & Electricity Department
Power House Complex, Electric Veng
Phone : 0389 2322848
EPABX: 0389-2323308/2326084
Fax: 0389-2320862

Superintending Engineer (Planning)
Office of the Engineer-in- Chief
Power & Electricity Department
Power House Complex, Electric Veng
Phone : 0389 2322038

INTRODUCTION

Power & Electricity Department was created in the year 1979 with the aim of providing reliable and quality power to various categories of consumers in the State

In Mizoram – Generation, Procurement, Transmission and Distribution of Power is carried out by Power & Electricity Department. The Department is responsible for promoting, developing and maintenance of Power Distribution Network within the State. The Department is under the Administrative control of Chief Secretary, Government of Mizoram and the Engineer-in-Chief is the functional head of the Department.

The Department had about 1.78 lakh consumers of various categories as on 31st March 2012. The State had a requirement of 107 MW of power (*as per 17th Electric Power Survey*) against which the total installed capacity of State owned generating stations was 52.77 MW (*comprising 29.35 MW of Hydel, 22.92 MW of Thermal power and 0.50 MW of Diesel generating set*) as on 31st March, 2012. The thermal generating stations were kept on standby mode owing to their high cost of operation and hence the effective installed capacity was only 29.35 MW. The State depends on outside sources mainly Central Sector Generating Stations (CGS) of North Eastern Power Corporation Limited (NEEPCO) and NHPC Limited (NHPC) for meeting the gap in its energy requirement.

The Department looks after the following assets as on 31st March, 2012 which are as below –

(1)	Transmission lines at 132kV level	-	728.96 Km.
	(a) Charged at 132kV	-	264.57 Km.
	(b) Charged at 33kV	-	464.39 Km.
(2)	Sub-stations at 132kV level	-	7 nos. (128.10MVA)
(3)	Sub-Station at 33/11kV level		
	(a) 33/11kV at 132kV Sub-Station	-	7 nos. (50.50MVA)
	(b) 33/11kV Sub-Stations	-	41 nos. (157.90MVA)
(4)	Sub-Transmission lines at 33kV level	-	972.026 Km.
(5)	11kV line	-	4947.64 Km.
(6)	DTs	-	1634 nos. (188.323MVA)
(7)	LT	-	2717.61 Km.

ORGANIZATION SET UP

Power & Electricity Department was created in the year 1979 with the aim of providing reliable and quality power to various categories of consumers in the State. Initially, the Department was headed by a Superintending Engineer under whom there were 4 (*four*) Divisions and 13 (*thirteen*) Sub-Divisions. The Department has since grown rapidly with the passing of time. The present organization set up with detail of post – Gazetted, Non-Gazetted and Work Charged are as follows:-

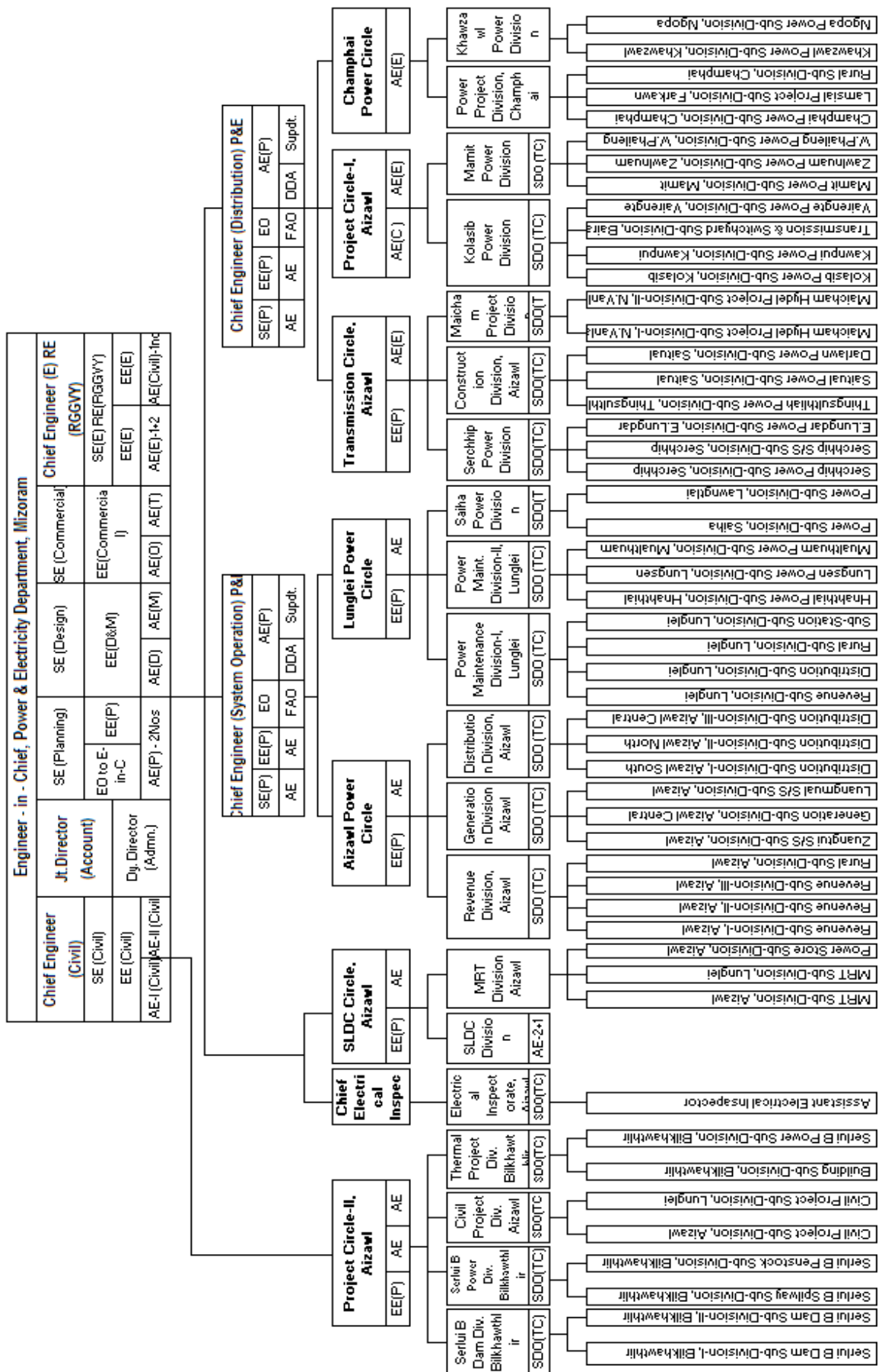
ABSTRACT OF SANCTIONED POST 2012

Sl. No	Name of Post	No. of Post			Total
		Electrical	Civil	Others	
1	2	3	4	5	6
	Engineer/Technical				
1	Engineer-in-Chief	1			1
2	Chief Engineer	3	1		4
3	Superintending Engineer	13	2		17
4	Executive Engineer	30	6		36
5	Asst. Engineer/S.D.O	77	19		96
6	Junior Engineer	197	59		256
7	Other Technical			1135	1135
	Total Engineer/Technical	321	87	1135	1545
	Account				
8	Joint Director of Accounts			1	1
9	Finance Account Officer			2	2
10	Divisional Accountant			20	20
11	Additional Divisional Accountant			29	29
12	Assistant Auditor			2	2
	Total Account			54	54
	Clerical & Others				
13	Dy. Director of Administration			3	3
14	Superintendent			2	2
15	Head Assistant/Assistant			28	28
16	Steno			17	17
17	UDC			112	112
18	LDC			165	165
19	IV Grade (Nonm-Technical)			262	262
	Total Clerical & Others			589	589
	Total Department	321	87	1778	2186

POWER & ELECTRICITY DEPARTMENT : MIZORAM
STATISTIC OF WORKCHARGED (AS ON MARCH, 2012)

Sl. No.	Category of posts (W/C)	E-in-C Office			Aizawl Power Circle			Lunglei Power Circle			Transmission Circle			Project Circle-I			Champhai Power Circle				Project Circle-II			Total
		SLDC	MRT Div.	Elect. Inspec.	Gen. Div.	Rev. Div.	Dist. Div.	PMD-I, Lunglei	PMD-II, Lunglei	Saiko PD	Serchhip PD	Conecth. Div.	Mischo m PD	SE (PC-I)	Kolacib PD	Mamit PD	Khaswa w/ PD	PPD, Champhai	SE (PC-II)	Thermal PD	Civil Proj. Div.	Serlui 'B' Proj. Div.	Serlui 'B' Dam Div.	
1	2	3	4	5	6	7	8	9	10	11	12	13	14		15	16	17	18	19	20	21	22	23	
1	Meter Reader					77		22	14	10	12	8	5		9	3	7	10					177	
2	WT Operator	2	1		1	1	7	4	2	1	1	3			5	1	1	1					30	
3	Section Assistant	1		2				3	3	1	1				2	1	1	1	3	2	3	2	25	
4	EO-II							3				2			2								7	
5	Computer Operator	1			1	1	1																4	
6	SBO-II												5										5	
7	Lineman-II		1		2	1																	4	
8	Mechanic-II																	1	1			1	3	
9	Carpenter											1									1		2	
10	Store Keeper					1							1										2	
11	Line Supervisor				1																		1	
12	Microscopist										1												1	
13	Welder																		1				1	
14	Surveyor									1													1	
15	Tracer																					1	1	
16	Compressor Operator												1										1	
17	Bulldozer Operator										1											2	1	5
18	Driver		1	1	8	3	3	1	1	1	1	5	1		2	1	1	1	2	1			33	
19	Blue Printer					2						1											3	
20	Chowkider	1	4			2	1	4	1	2	1	3	2		1		2					1	25	
21	Sweeper					1		3															4	
22	Electrical Worker	1	3		11	16	14	28	23	12	13	17	2		30	4	13	11	3	1	2		204	
	Total	6	10	3	24	105	26	68	44	28	31	38	19	0	52	10	20	27	0	10	5	7	539	

ORGANISATION CHART OF POWER & ELECTRICITY DEPARTMENT, MIZORAM



ANNUAL PLAN AT A GLANCE

The Annual Plan outlays during 11th plan period (2007-2008 to 2011-2012) at a glance is as below -

Sl. No.	Year	<u>Rs Lakhs</u>			
		Non-Earmarked	Earmarked	NCSE / IREP	TOTAL
1.	2007-08	4718.00	3235.00	61.00	8014.00
2.	2008-09	3256.00	3494.00	61.00	6811.00
3.	2009-10	4830.00	3587.00	61.00	8478.00
4.	2010-11	6052.00	1585.56	61.00	7698.56
5.	2011-12	5961.12	3063.88	61.00	9086.00

Salient features of Annual Plan 2011 - 12 is given below :

The projected outlay can be divided as follows:-

- 1) **POWER**
 - (a) Direction & Administration : Rs 3956.00 lakh
 - (b) Works
 - (i) Un-Earmarked : Rs 2005.12 lakh
 - (ii) Earmarked : Rs 3063.88 lakh
 - 2) Non-Conventional Sources of Energy : Rs 50.00 lakh
 - 3) Integrated Rural Energy Programme : Rs 11.00 lakh
- Total : Rs 9086.00 lakh**

3. **Direction & Administration** : There are 93 nos. of Plan posts which had not yet been converted into non-plan posts. The establishment of these 93 posts had to be met from plan fund. In addition to the above, there are many infrastructural assets created by the Department which need proper maintenance. The maintenance of many of these assets is still met from plan fund as the same could not be met from non-plan due to shortage of fund. In addition to this, the Department looks after 539 nos. of W/C staffs and 2214 nos. of M/R. Moreover, the Department has to meet the expenditure incurred on TA, Medical Re-imburement etc. of staff under Plan fund. An amount of Rs 3956.00 lakh is utilized for D&A during 2011-12.

4. **Works**: The works component can be grouped as follows:

Un-earmarked:

(a) **Generation** : During 2011-12, the Department took up the following works under Hydel Generation -

(i) Construction of Serlui 'B' SHP	- Rs	700.00	lakh
(iii) Construction of Tlawva SHP (NABARD)	- Rs	1000.00	lakh
TOTAL	- Rs	1700.00	lakh

It may be mentioned that all the machines of Serlui 'B' SHP are technically commissioned during 2010-11

(b) **Transmission** : The Department took up the following Transmission lines during 2011-12 -

(i) Construction of 132kV Saitual to Darlawn(winding up of the work)	- Rs		
12.40 lakh			
TOTAL	- Rs	12.40	lakh

(c) **Distribution** : The Department took up the following Distribution work during 2011-12 -

(i) Improvement of 33kV Bairabi to Zamuang	- Rs	22.00	lakh
(ii) Repair of various type of Transformers	- Rs	60.00	lakh
TOTAL	- Rs	82.00	lakh

(c) **Buildings** : The Department took up the following buildings during 2011-12

(i) Extension of SLDC building	- Rs	201.00	lakh
(ii) Construction of Serchhip Rest House Cottage	- Rs	8.80	lakh
(iii) Repair of type – II quarter at Vairengte	- Rs	0.92	lakh
TOTAL	- Rs	210.72	lakh

Earmarked:

(a) **Special Plan Assistance (SPA)** : The following works were taken up under SPA during 2011-12 -

(i) Construction of 1x12.5MVA, 132/33kV Sub-Station at Sihhmui	- Rs	920.00	lakh
(ii) Installation of additional 1x12.5MVA, 132/33kV Sub-Station at Luangmual	- Rs	507.76	lakh
(iii) Construction of 1x12.5MVA, 132/33kV Sub-Station at Champhai	- Rs	707.79	lakh
(iv) Improvement of 33kV Sub-Station at Project veng, Kolasib	- Rs	135.51	lakh
(v) Construction of 30Kms 33kV line from Khuangleng to S. Khawbung on steel tubular pole	- Rs	282.00	lakh
(vi) Construction of 1x6.3MVA, 33/11kV Sub-Station at			

S. Khawbung with associated lines lakh	- Rs	365.82
TOTAL lakh	- Rs	2918.88

5. **Non-Conventional Sources of Energy (NCSE)** : For Non-Conventional Sources of Energy, Rs 50.00 lakh was provided during 2011-12 for taking up Non-Conventional System of Energy Sources. This fund was transferred to Zoram Energy Development Agency (ZEDA), an autonomous body for non-conventional sources of energy in Mizoram as Grant-in-Aid.

6. **Integrated Rural Energy Programme (IREP)** : Under this scheme, Rs 11.00 lakh was provided during 2011-12 and similar to above, fund was transferred to ZEDA as Grant-in-Aid.

7. **RGVY** : The Department executes RGVY scheme comprising construction of 4 nos. 33/11kV Sub-Stations, electrification of 137 un-electrified villages, 570 intensive electrification and 27417 BPL connections at an estimated cost of Rs 267.95 crore wherein the cumulative achievement upto 2011-12 is 91 villages. Under UEV, 336 villages, under IE, 11321 BPL connections.

8) **R-APDRP Part-A** : The Department executes R-APDRP Part-A at the cost of Rs 35.12 crore with the aim of establishing base line data of various distribution networks within 9 notified towns of Mizoram. PFC so far sanctioned Rs 10.54 crore for this work.

ACTUAL REVENUE RECEIPT DURING 2011-12

Amount in Rupees

Sl No	Name of Division	CLASSIFICATION OF REVENUE					Total
		Sale of Energy	Misc. Receipt	Housing	Interest on HBA, etc	VAT/ TAX/ RTI	
1	2	3	4	5	6	7	8
1	Revenue Division	487,844,543	6,918,269	24,495	115,093		494,902,400
2	Distribution Division			33,057	127,450		160,507
3	Generation Division			36,818	145,968		182,786
4	SE (APC)			780			780
	Total APC	487,844,543	6,918,269	95,150	388,511	-	495,246,473
5	Power Maint. Division-I	93,395,968	1,131,539	28,549	78,141		94,634,197
6	Power Maint. Division-II	21,842,242	1,121,541	16,065	53,522		23,033,370
7	Saiha Power Division	27,659,176	536,235	31,670	6,549	7,500	28,241,130
8	SE (LPC)			1,500	8,050		9,550
	Total LPC	142,897,386	2,789,315	77,784	146,262	7,500	145,918,247
9	CE (SO)			3,300	32,746	-	36,046
	Total CE (SO)	630,741,929	9,707,584	176,234	567,519	7,500	641,200,766
10	Power Proj. Div, Champhai	38,673,800	2,191,813	20,616	12,579		40,898,808
11	Khawzawl Power Division	17,101,269	1,777,198	16,126	2,270		18,896,863
12	SE (CPC)		700		1,200		1,900
	Total CPC	55,775,069	3,969,711	36,742	16,049	-	59,797,571
13	Kolasib Power Division	79,761,608	2,072,270	83,800	25,937		81,943,615
14	Mamit Power Division	22,653,429	1,097,775	16,100	9,716		23,777,020
15	SE (PC-I)				33,500		33,500
	Total PC-I	102,415,037	3,170,045	99,900	69,153	-	105,754,135
16	Construction Division	28,509,898	1,748,135	24,709	72,977		30,355,719
17	Serchhip Power Division	33,575,185	1,766,755	52,137	82,945	392,148	35,869,170
18	Maicham Project Division	4,520,986	389,166		44,141		4,954,293
19	SE (TC)	-	-	-	86,593	-	86,593
	Total TC	66,606,069	3,904,056	76,846	286,656	392,148	71,265,775
20	CE (Distribution)				48,200		48,200
	Total CE (Distribution)	224,796,175	11,043,812	213,488	420,058	392,148	236,865,681
21	Civil Project Division		183,000	6,565	42,955		232,520
22	Thermal Project Division		2,280	17,540		25,598	45,418
23	Serlui 'B' Project Division						-
24	Serlui 'B' Dam Division			11,667		598,504	610,171
25	SE (PC-II)			6,579			6,579
	Total PC-II	-	185,280	42,351	42,955	624,102	894,688
26	EE(SLDC)	182,947,116			20,538		182,967,654
27	MRT		167,451	15,489	104,856		287,796
28	Inspectorate		408,745	3,225	95,065		507,035
29	E-in-C	32,635,560	1,801,731	14,900	161,729		34,613,920
	Total E-in-C	215,582,676	2,377,927	33,614	382,188	-	218,376,405
	TOTAL DEPTT	1,071,120,780	23,314,603	465,687	1,412,720	1,023,750	1,097,337,540

STATUS OF GENERATING STATIONS IN MIZORAM

A. HYDEL

Sl No.	Name	Location	Capacity	Commencement Year	Commissioning Year
1	2	3	4	5	6
1	Serlui 'A'	Aizawl	2x250+1x500	1982	24/4/1984
2	Khawiva	Lunglei	3x350	1983	8/12/1988
3	Tuirivang	Muallungthu	3x100	1985	14/8/1989
4	Tuipui	Champhai	2x250	1988	15/12/1991
5	Maicham I	N. Vanlaiphai	2x1000	1989	5/1/1996
6	Teirei	W. Phaileng	3x1000	1994	12/10/1999
7	Tuipanglui	Tuipang L	2x1500	1992	17/12/04
8	Kau Tlabung	Thenhlum	2x1500	1994	5/5/2005
9	Lamsial	Farkawn	2x250	1999	26/8/08
10	Maicham II	N. Vanlaiphai	2x1500	2001	11/11/2009
11	Serlui 'B'	Bilkhawthlir	3x4000	2004	All machines are technically commissioned in 2010

B. THERMAL/DIESEL

1	Bairabi Thermal Power Plant	22.92MW	17.11.2001	May-04
2	Lengpui Diesel Power Station	0.50MW		1998

TRANSMISSION & DISTRIBUTION LINES

(In Km.)

Sl No.	Division	132kV	132kV charged at 33kV	66kV	33kV	11kV	LT
1	Power Maintenance Div - I, Lunglei	69.13	7.4		12	224.87	187.11
2	Power Maintenance Div - II, Lunglei		29.94		207.52	750.11	313.01
3	Saiha Power Division		57		80	804.85	302.61
4	Generation Division, Aizawl	0.8			54.86	20	4
5	Distribution Division, Aizawl	0			0	251.9	445.66
6	Revenue Division, Aizawl	0				299.75	180.825
7	Construction Division, Aizawl	110.59			75.996	380.097	209.455
8	Serchhip Power Division	54.04	116.89		97.7	317.12	225.64
9	Mamit Power Divison		75		192.95	685.06	214.28
10	Kolasib Power Division	30.01		117	56.5	295.5	246
11	Maicham Projct Division				39	119.5	61.28
12	Power Project Division, Champhai		30.00		122.5	378.07	154
13	Khawzawl Power Division		148.16		33	420.81	173.74
	GRAND TOTAL	264.57	464.39	117	972.026	4947.637	2717.61

132 KV LINES IN MIZORAM

Sl. No.	Name of Lines	Line Length (Km)	Date of Completion
1	PGCI to Luangmual	0.80	12/8/1998
2	Zuangtui to Bukpui	54.04	1986
3	Bukpui to Khawiva	69.13	1987
4	Zuangtui to Saitual	50.00	November 1993
5	Saitual to Khawzawl	43.00	26/7/1995
6	Luangmual to W. Phaileng	75.00	31/11/1995
7	Bukpui to E. Lungdar	45.51	13/12/1996
8	Khawiva to Lungsen	37.34	1997
9	Khawiva to Lawngtlai	57.00	1990
10	Bukpui to Thenhlum	71.38	8/5/1997
11	Bairabi to Bawktlang	30.01	16/9/2008
12	Khawzwl to Ngopa	57.27	15/12/2006
13	Khawzawl to E. Lungdar	47.89	13/12/2007
14	Khawzwl to Champhai	30.00	31/7/2011
15	Saitual to Darlawn	60.59	18/11/2011
	TOTAL	728.96	

SUB-STATIONS IN MIZORAM

A. 132 KV SUB-STATIONS

SI No	Name of Sub-Station	Voltage Ratio	Capacity (MVA)	Date of Completion
1	132kV Zuangtui S/S (Upper)	132/33kV	2x12.5	1988
		33/11kV	1x2.5 (Upper)	
			2x6.3 (Lower)	
			1x2.5 (Lower)	
2	132kV Bukpui S/S	132/33kV	1x12.5	5th May, 1990
			1x6.3	
		33/11kV	1x3.0	
			1x2.5	
3	132kV Luangmual S/S	132/33kV	2x12.5	July, 1998
		33/11kV	1x6.3	
			1x3.5	
4	132kV Saitual S/S	132/33kV	1x6.3	17th November, 2006
		33/11	1x6.3	
5	132kV Bawktlang S/s	132/66kV	1x12.5	March, 2005
		132/33kV	1x12.5	20th October, 2010
		66/33kV	2x6.3	
6	132kV Bairabi Thermal S/S	11/132kV	2x15	May, 2004
		132/33kV	1x3	May, 2004
7	132kV Khawiva S/S	132/33kV	1x12.5	November, 1994
			1x12.5	23rd August, 2009
		33/11kV	1x6.3 + 2x2.5	

B. 33KV SUB-STATIONS

SI No	Name of Sub-Station	Voltage Ratio	Capacity (MVA)	Date of Completion
1	33kV Mualpui S/S	33/11kV	2x6.3	9.11.2001
2	33kV Chawnpui S/S	33/11kV	2x6.3	October 2004
3	33kV Sairang S/S	33/11kV	1x2.5	20th June, 2008
4	33kV Lengpui S/S	33/11kV	1x2.5	July 2006
5	33kV Tlangnuam S/S	33/11kV	2x6.3	25.3.1992
6	33kV Aibawk S/S	33/11kV	1x2.5	December 2007
7	33kV Zokhawsang S/S	33/11kV	1x2.5	24th June, 2009
8	33kV Chhingchhip S/S	33/11kV	1x1.6	December 2007
9	33kV E.Lungdar S/S	33/11kV	1x2.5	13.12.1996
10	33kV Thenhlum S/S	33/11kV	1x2.5	April 1997
11	33kV W.Phaileng S/S	33/11kV	1x2.5	March 2001
12	33kV Mamit S/S	33/11kV	1x2.5	March 2002
13	33kV Zamuang S/S	33/11kV	1x3.15	May 1995

SI No	Name of Sub-Station	Voltage Ratio	Capacity (MVA)	Date of Completion
14	33kV Rawpuichhip S/S	33/11kV	1x1.6	31.5.2008
15	33kV Thingsulthliah S/S	33/11kV	1x2.5	June 2004
16	33kV Khawruhlian S/s	33/11kV	1x2.5	June 1995
17	33kV Darlawn S/S	33/11kV	2x2.5	15th May 2012
18	33kV Sentlang S/S	33/11kV	1x2.5	June 2008
19	33kV Project Veng, Kolasib S/S	33/11kV	1x3.0	15 th July, 1987
20	33kV Kawnpui S/S	33/11kV	1x3.0	11 th June, 2008
21	33kV Vairengte S/S	33/11kV	1x3.0	21.4.2001
22	33kV Bilkhawthlir S/S	33/11kV	1x2.5	1994
23	33kV Bairabi S/S	33/11kV	1x2.5	March 1995
24	33kV Zaizawhtlang S/S	33/11kV	1x2.5	December 2003
25	33kV Theiriart S/S	33/11kV	1x6.3	26 th May, 2007
26	33kv Sazaikawn S/S	33/11kV	1x6.3	15 th Sept. 2008
27	33kV Tlabung S/S	33/11kV	1x1.6	Aug., 2008
28	33kV Lungsen S/S	33/11kV	2x2.5	21.1.2009
29	33kV Hnahthial S/S	33/11kv	1x2	15.12.2001
30	33kV Lawngtlai S/S	33/11kV	1x2.5 + 1x1.6	16 th Aug. 1995
31	33kV Saiha S/S	33/11kV	1x2.5 + 1x0.75	Aug. 1995
32	33kV Tui pang 'L' S/S	33/11kV	1x1.6	2008
33	33kv Champhai S/S (Upper)	33/11kV	1x2.5	October 2004
34	33kV Champhai S/S (Lower)	33/11kV	1x6.3	9.11.2005
35	33kV Khawzawl S/S	33/11kV	1x2.5	November 2006
36	33kV Kawkulh S/S	33/11kV	1x2.5	Aug. 2004
37	33kV Ngopa S/s	33/11kV	1x2.5	2008
38	33kV Hnahlan S/S	33/11kV	1x1.6	6 th June, 2008
39	33kV Khuangleng S/S	33/11kV	1x2.5	25 th Aug. 2008
40	33kV Thenzawl S/S	33/11 kV	1x1.6	5 March, 2012
41	33kV Indoor (Aizawl P/H Complex) S/S	33/11 kV	2x6.3	21.4.2010

STATUS OF DISTRIBUTION TRANSFORMERS IN MIZORAM

SI No.	Name of Division	33/0.4												11/0.2												11/0.4												TT
		1000 KVA	630 KVA	500 KVA	315 KVA	250 KVA	200 KVA	100 KVA	63 KV A	25 KVA	16 KVA	1500 KVA	1000 KVA	750 KVA	630 KVA	500 KVA	400 KVA	350 KVA	315 KVA	300 KVA	250 KVA	200 KVA	160 KVA	150 KVA	100 KVA	63 KVA	50 KVA	25 KVA	16 KVA									
1	Power Maintenance Division - I					2			2	4			2		1	1					20	1		26	15		25	2	101									
2	Power Maintenance Division - II						1	6	17						1						15			22	24		141		227									
3	Saitha Power Division					1		5	2			1		1	1						8		46	24		108	1	198										
	TOTAL LPC					3		13	23			3	0	2	3						43	1	94	63		274	3	526										
	Owned by other under LPC								1												5	1	3	10		22		42										
	NET TOTAL LPC	0	0	0	3	3	1	13	22			3	0	2	3	0	0	0	0	0	38	0	0	91	53		252	3	484									
1	Generation Division, Aizawl													2							1			1	2		1		7									
2	Distribution Division, Aizawl											9	1	4	27	1	5	1	2	140	1		2	89	18		14		314									
3	Revenue Division, Aizawl	2													2					13							41	1	96									
	TOTAL APC	2	0	0	0	2	0	0	0			9	1	6	29	1	5	1	2	154	1	0	2	110	37		56	1	417									
1	Construction Division, Aizawl					2															10			33	31	2	27		113									
2	Serchhip Power Division	1				1					1			2							8			31	24		13		81									
3	Macham Project Division																				2			7	11		3		23									
	TOTAL TC	0	1	0	0	3	0	1	4	4		0	0	2	0	0	0	0	0	20	0	0	0	71	66	2	43	0	217									
1	Kolasib Power Division	2				3					1				3						20			41	17		52		144									
	Mamit Power Division			1			2														9			28	22		102	4	168									
	TOTAL PC-I	0	2	1	0	3	2	0	1	0	2	2	1	0	3	0	0	0	0	29	0	0	0	69	39	0	154	4	312									
1	Power Project Division, Champhai										3	1								18				32	25		16		97									
2	Khawzawl Power Division										4													37	21		45		107									
	TOTAL CPC	0	0	0	0	0	0	7	1	0	2	0	0	0	0	0	0	0	0	18	0	0	0	69	46	0	61	0	204									
	GRAND TOTAL	2	3	1	0	9	2	7	4	17	30	2	13	1	10	35	1	5	1	2	259	1	0	2	410	241	2	566	8	1634								

MONTHLY POWER PURCHASE FROM CPSU & CTU

Month	Total Energy Scheduled (MU)	Scheduled Energy Bill Amount (Rs in lakh)	Transmission Charge (Rs in Lakh)	NERLDC Fees & Charges (Rs in lakh)	Total Bill Amount (Rs in lakh)
April-11	30.195	806.000	89.980	3.030	899.010
May-11	28.680	773.290	100.750	3.130	877.170
June-11	32.281	818.470	99.620	3.120	921.210
July-11	43.472	856.690	126.300	3.120	986.110
August-11	45.149	834.430	131.500	3.120	969.050
September-11	41.327	786.390	89.580	3.120	879.090
October-11	36.644	773.400	108.800	3.110	885.310
November-11	30.496	715.890	111.500	3.090	830.480
December-11	27.995	697.070	109.620	3.100	809.790
January-12	27.493	750.070	100.910	3.100	854.080
February-12	23.798	633.080	112.940	3.100	749.120
March-12	18.785	667.680	109.880	3.040	780.600
TOTAL	386.315	9,112.460	1,291.380	37.180	10,441.020

POWER TRADING THROUGH INDIAN ENERGY EXCHANGE

Month	Energy Sold (MWH)	Amount Receivable (Rs)	Deduction from Sale proceed (Rs)	Amount Received (Rs)	Balance to received as on 31.3.2012 (Rs)
April-11	2,250.00	6,907,218.68		6,907,218.68	
May-11	2,325.00	6,306,357.13		6,306,357.13	
June-11	2,634.00	6,732,038.89		6,732,038.89	
July-11	8,520.00	22,028,579.47		22,028,579.47	
August-11	14,985.00	40,655,120.41		40,655,120.41	
September-11	12,394.00	37,448,378.86		37,448,378.86	
October-11	7,074.40	33,972,501.29		33,972,501.29	
November-11	4,091.00	14,239,834.85		14,239,834.85	
December-11	1,191.00	3,657,020.59		3,657,020.59	
January-12	784.00	1,525,866.20		1,525,866.20	
February-12	799.00	1,647,406.10		1,647,406.10	
March-12	28.00	69,000.03		69,000.03	
TOTAL	57,075.40	175,189,322.50	-	175,189,322.50	-

ENERGY ACCOUNTING(ABSTRACT)

SI No	Item	Unit	Quantity
1	Power Import	MU	442.6
2	Local Generation	MU	22.33
	Total Power Available	MU	464.93
4	Energy Sold	MU	316.22
5	Revenue Collected	Rs in Crore	133.46
6	T&D Loss	MU	148.71
7	Percentage of T&D Loss	%	31.99%
8	AT & C Loss	%	41.3
9	Billing Efficiency	%	71%
10	Collection Efficiency	%	82%

*Power & Electricity Department
Government of Mizoram*

Annual Report

2011 - 2012

Issued by
Engineer-in-Chief
Power & Electricity Department